

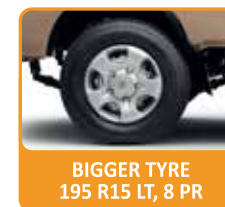
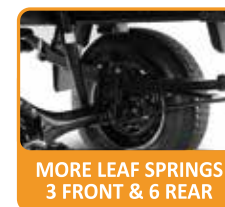
Technical Specifications	DOST ⁺
Weight (kg)	
GVW	2805
Rated Payload	1500
Load Body Dimensions (mm/ft)	
Length	2645 mm/8' 8"
Width	1620 mm/5' 4"
Height	440 mm/1' 5"
Powertrain	
Engine Type	1.5L, 3 Cylinder Diesel Engine (BSVI)
Displacement	1478 cc
Max Power HP (@rpm)	51.45kw (70hp) @3300 rpm
Max Torque Nm (@rpm)	170 Nm@1600-2400 rpm
Clutch	240 mm Diameter, Diaphragm, Single Dry Plate, Mechanical Cable Operated
Transmission	Fully Synchronesh, 5-speed Gearbox Manual, Integrated Bell Housing
Fuel Tank Capacity	40 Litres
Emission Standard	BS VI
Suspension & Tyres	
Front Suspension	Rigid Suspension with Parabolic Leaf and Double-acting Shock Absorber
Rear Suspension	Semi Elliptical Leaf Spring with Double-acting Shock Absorber
Tyre Size	195 R15 LT 8 PR
Overall Dimensions (mm)	
Wheel Base	2510
Overall Length	4630
Overall Height	1930
Steering	
Steering System	Manual & Power Steering both available
Brakes	
Type	Vacuum-assisted Hydraulic Brake with LSPV

COLOURS		
		
	LE/LS/LX WHITE	LE/LS/LX IRISH CREAM

*Terms & Conditions Apply.

*Disclaimer: Accessories shown are not a part of the standard equipment. The illustrations are only indicative and may vary from the actual vehicle. Ashok Leyland reserves the right to alter the technical specifications/designs without prior notice and without liability, in view of our policy of continuously improving our products. Fuel efficiency is based on Ashok Leyland's internal test reports. More indicates more when compared to the DOST. 5 year or 2 lakh km warranty, whichever is earlier – 2 year or 1 lakh km whichever is earlier is provided by the manufacturer, followed by 36 months of extended warranty by 3rd Party if the 2 lakh km has not been clocked by the vehicle in the first 2 years. May 2023. (OB*D-2).

	Variant		
Features	LE	LS	LX
Comfort & convenience			
Power Steering	X	✓	✓
Air Conditioner	X	X	✓
Sliding Window (Behind Driver Seat)	✓	✓	✓
Mobile Charging Point	✓	✓	✓
Driver Seat Adjustment	✓	✓	✓
Lockable Glove Box	✓	✓	✓
Style			
Instrument Panel (Dashboard)	Dual Tone	Dual Tone	Dual Tone
Seat Cover Material (Dual Tone)	Vinyl	Vinyl	Vinyl
Front Bumper	Black	Black	Body Coloured Only
Safety			
Load sensing proportioning valve with booster brakes	✓	✓	✓
Front impact absorption bar	✓	✓	✓
ELR Seat Belts	✓	✓	✓



For further details, please contact:
1800 1022 666 (toll-free)
www.ashokleyland.com

Or write to us at:
Ashok Leyland Limited,
6th Floor – LCV Marketing,
No.1 Sardar Patel Road, Guindy,
Chennai - 600 032. Tel: (044) 22206000

Authorised dealer:



ASHOK LEYLAND
Koi Manzil Door Nahin

DOSTI KA VAADA. KAMAAYI AUR BHI ZYAADA.
Presenting DOST⁺ BS6 with **i-Gen6** TECHNOLOGY.

6 ka DUM
ZYAADA se
ZYAADA PROFIT

**10%
MORE
MILEAGE***



DOST⁺

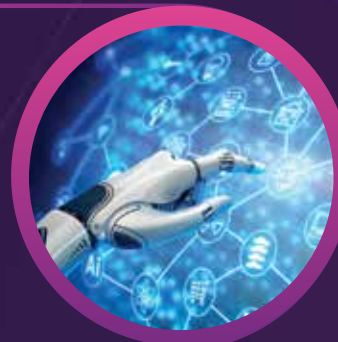


DOST⁺

1 Zyaada TECHNOLOGY

New Age BS6 Technology: i-GEN6: Greener and Cleaner. Designed and Engineered for India and Indian Driving Conditions.

Superior Performance and Profitability



2 Zyaada MILEAGE

Get MORE Mileage with Superior and Proven P15 Engine. Earn more with Additional savings on Fuel.

10%* More Mileage



3 Zyaada POWER & TORQUE

Get MORE Power with the Superior i-GEN 6 Technology. Do more trips faster and earn MORE.

Power : 51.45 Kw (70 hp) | Torque : 170 Nm



4 Zyaada PAYLOAD

Get the Power of More with More Payload, Bigger Load Body, Bigger Tyres and More Leaf Springs. Ensures you carry more and Earn More.

Payload 1500 kg | Load Body 8 ft 8 inch | 15 inch Tyre



5 Zyaada COMFORT

Get MORE Comfort with Factory-fitted AC and Spacious Cabin. Drive Longer and do more trips without Fatigue.

Factory-fitted AC and Power Steering



6 Zyaada BHAROSA

Get Superior Warranty* of 5 years or 2 lakh km. Enjoy higher Service Intervals leading to lowest Maintenance Cost. Only 4.4 litres Engine oil required versus 7 litres in competition vehicle.

5 years or 2 lakh km*



TECHNOLOGY

INNOVATIVE | INTELLIGENT | INDIAN

6 ka DUM

ZYAADA se ZYAADA PROFIT

MORE ON VALUE | LESS ON YOUR POCKET